

TANITA®

THE STANDARD

NEW

RD-953 InnerScan PRO

BLUETOOTH BODY COMPOSITION MONITOR

WITH MULTI-FREQUENCY BIA TECHNOLOGY



FDA Cleared "Multi Frequency" BIA Technology

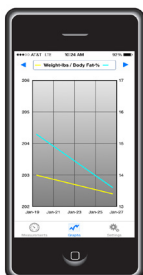
Integrated Bluetooth 4.0 long battery life allowing instant data transmission to your iPhone 4S and above or Android 4.4 and above

Easy-to-read measurements with instant color-coded assessments

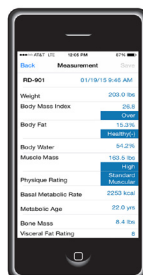
User recognition - just step on and the scale will start taking a measurement

11 Full-Body Measurements, including muscle quality score

Graph



Measure



Free Tanita Healthy Edge® Mobile App

Automatically upload your measurements to Tanita Healthy Edge® Mobile App.

✓ **iPhone 4S or above**

✓ **Android 4.4 or above**

Provides a powerful tool to track your progress with easy-to-read graphs and helpful assessments. Set your own targets and achieve your personal fitness and wellness goals.

***RD-953 InnerScan Pro Currently Only Available in the USA**

©2020 Tanita Corporation of America Inc. RD953PROKM9/20

RD-953 InnerScan PRO

BLUETOOTH BODY COMPOSITION MONITOR WITH **MULTI-FREQUENCY BIA TECHNOLOGY**

Tanita, the designer, manufacturer & distributor of the world's most accurate, radio wireless body composition scales. Since creating the world's first stand-on body composition monitor in 1992, Tanita Bioelectrical Impedance Analysis (BIA) technology has been used by health and well-being experts around the world.

Tanita has produced the highest standard in fitness and wellness assessment. The RD-953 InnerScan Pro incorporates the very best **FDA Cleared**, medical grade **"Multi Frequency"**, BIA technology, allowing you to have the most accurate body composition accuracy in the comfort of your home.

The advanced technology found within the RD-953 InnerScan PRO provides an in-depth analysis of 11 body composition readings. Measurements include: Weight, Body Fat, Muscle Mass, Muscle Quality Score, Physique Rating, Bone Mass, Visceral Fat, Basal Metabolic Rate (BMR), Metabolic Age, Total Body Water, and BMI. No other consumer Bluetooth scale offers such a wide array of capability, making the RD-953 InnerScan PRO the world's most accurate home-use body composition monitor. BIA is quick and non-invasive, and is one of the most thorough and reliable ways to measure body composition, clinically comparable to DXA (dual-energy x-ray absorptiometry) and hydrostatic (underwater) weighing.




Specifications:

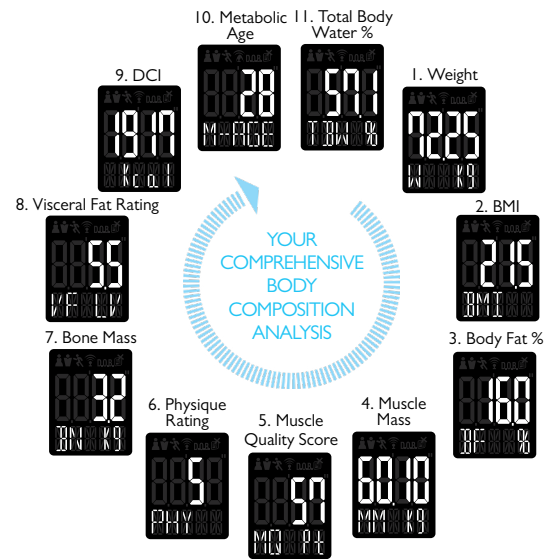
- ✓ Bluetooth 4.0 Low Energy
- ✓ Capacity: 440lb (200 kg)
- ✓ Weight increments:
 - 0-200lb / 0.1lb, 200-440lb / 0.2lb
 - 0-100kg / 0.05kg, 100-200kg / 0.1kg
- ✓ Body Fat Increments: 0.1%
- ✓ Tempered glass platform with transparent electrodes
- ✓ 4 user memory - each with it's own color display
- ✓ Color Coded Indicators
- ✓ Weight only function
- ✓ Guest Mode & Athlete Mode
- ✓ Power Supply: 4 x AA (included)
- ✓ Dimensions: 11.7" x 12.9" x 1.3"
- ✓ Weight: 4.6lb

YOUR MEASUREMENTS ARE ASSESSED AND SHOWN IN 3 SIMPLE LEVELS

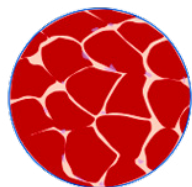
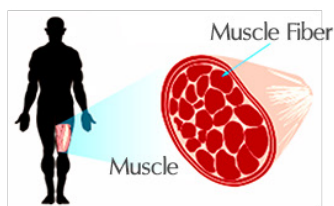
EASY TO READ WITH 3 BACKLIT COLORS

The measurements will be displayed in the following color coded indicators giving you an instant review of your body status.

 <p style="color: green; font-weight: bold;">GREEN: HEALTHY</p>	 <p style="color: yellow; font-weight: bold;">YELLOW: BORDERLINE</p>	 <p style="color: red; font-weight: bold;">RED: ATTENTION NEEDED</p>
--	---	---



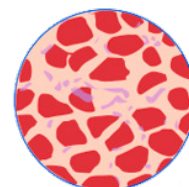
Muscle Quality Score



HIGH

Higher density of muscle fiber with little fat, water and connective tissue, etc.

⇒ **Maintain regular exercise to ensure your Muscle Quality stays within the healthy range.**



LOW

Muscle fiber is thinner and fewer as compared with other substances

⇒ **Increase exercise on a regular basis to improve your Muscle Quality Score**