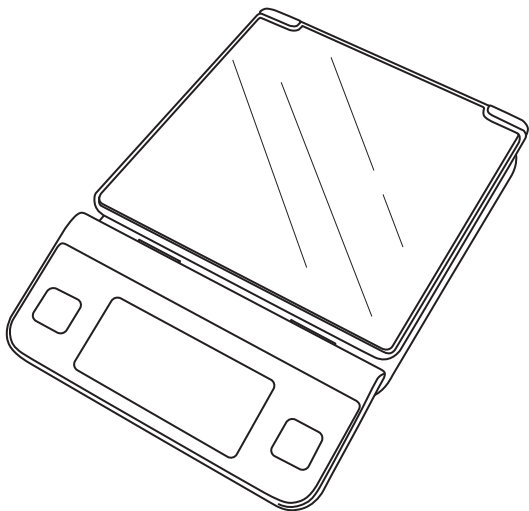


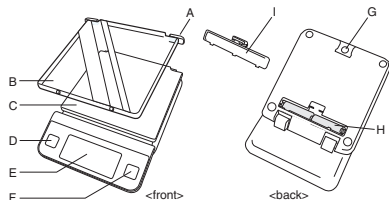
TANITA®

Digital Scale
KD-191F
Instruction Manual



Read this Instruction Manual carefully and keep it for future reference.

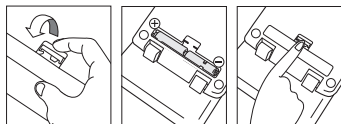
Name of parts



A	Lock
B	Clear cover
C	Tray
D	OFF button
E	Display
F	ON/TARE button
G	Hook hanger
H	Battery compartment
I	Lid (Battery compartment)

How to use

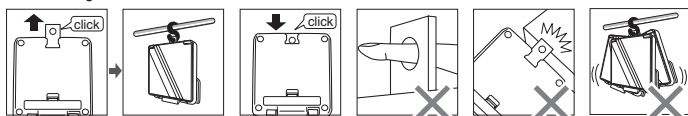
◆Battery placement



Insert 2x "AAA" "R03" or "24F" batteries as indicated.

◆Hook Hanger

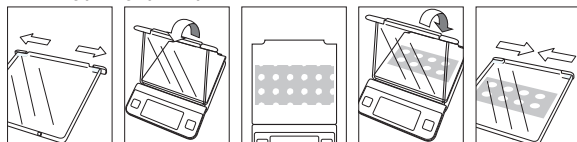
This scale can be hung on a hook for convenience.



When not using the hook hanger, press it into the scale until it clicks for storage.

Do not hang the scale in a location where it can swing, drop easily, or in an otherwise unstable place. Doing so may damage the scale or cause injury due to the scale colliding with another object or dropping from the hook. Also, do not use a suction pad hook, double-sided tape hook, or weak magnet hook. Such hooks may not be able to support the weight of the scale, causing it to fall.

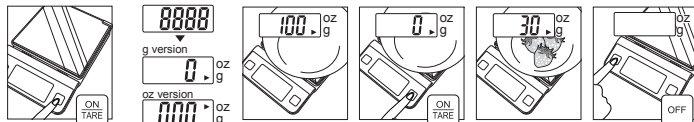
◆Inserting photographs or patterns etc.



Double-sided tape can be used to hold the photograph or pattern in place. To cover the entire surface of the tray with a photograph or pattern, cut the photograph or pattern to the same size as the paper that was included with the scale. (max. 5 in x 4.7 in)

◆Weighing

If the weight of the item(s) exceeds the scale's capacity, "EEEE" will appear on the display. Make sure you place item(s) in the center of the tray.



Push ON/TARE.

g version
0.00 g
oz version
0.00 oz

Place a bowl on the tray.

Push ON/TARE to subtract the weight of the bowl.

Place the material to be weighed.

After removing the bowl, the display will show a negative reading or "----". Press the ON/TARE button to return the display to "0". Push OFF to turn off.

◆Mode change

Push ON/TARE. When a mode change is required, press ON/TARE and OFF buttons simultaneously, and then select the proper mode. (for the g/oz version)

◆Automatic power off

The scale is designed with an auto power-off function for energy efficiency. If the same reading is displayed for more than 10 minutes the scale will automatically turn off.

◆Battery replacement

If "Lo" appears in the display when attempting to weigh, replace the battery. (following previous instructions)

Trouble shooting

- **The power doesn't turn on.**
Insert 2 new size AAA ("R03" or "24F") batteries. Be sure that the polarity of the batteries is set properly.
- **"Err6" or "Err7" appears on the display.**
The scale needs to be repaired. Please contact your retailer.

Specification

	MODEL	KD-191F
g/oz version	Capacity	3kg/105 oz
	Minimum graduation	1g/0.05oz

Federal Communications Commission and Canadian ICES Notice

This equipment has been tested and found to comply with the limits for a Class B digital device, pursuant to Part 15 of the FCC Rules and Canadian ICES-003. These limits are designed to provide reasonable protection against harmful interference in a residential installation. This equipment generates, uses and can radiate radio frequency energy and, if not installed and used in accordance with the instructions, may cause harmful interference to radio communications. However, there is no guarantee that interference will not occur in a particular installation. If this equipment does cause harmful interference to radio or television reception, which can be determined by turning the equipment off and on, the user is encouraged to try to correct the interference by one or more of the following measures:

- **Reorient or relocate the receiving antenna.**
- **Increase the separation between the equipment and receiver.**
- **Connect the equipment into an outlet on a circuit different from that to which the receiver is connected.**
- **Consult the dealer or an experienced radio or television technician for help.**

Modifications

The FCC requires the user to be notified that any changes or modifications made to this device that are not expressly approved by Tanita Corporation may void the user's authority to operate the equipment.

CAUTIONS

This scale is a precision instrument and must be used under certain conditions to ensure accurate measurement. Please observe the following when using this scale.

- 1. Never disassemble the unit.**
- 2. Use in a vibration-free location that is not exposed to direct sunlight.**
- 3. The scale will not measure accurately in an environment subject to large temperature and humidity changes. The unit takes approximately two hours to adjust to such changes.**
- 4. Keep chemicals off the scale. Wipe with a damp cloth from time to time.**
- 5. Do not allow the scale to get wet.**
- 6. Do not use or store near heat sources(ovens, heaters, etc.).**
- 7. When not used for a long time, remove the batteries and store the unit in a dry, dust-free location.**
- 8. Check and replace batteries before sending the unit for repair. If repair is necessary, remove the batteries, repack the unit in the original carton and protect with packing materials before shipment.**
- 9. Do not leave objects on the weighing tray when the scale is not in use.**
- 10. To avoid measurement error, do not measure while using equipment that generates radio waves, such as mobile phones.**

Representative

TANITA Europe B.V.

Holland Office Centre. Kruisweg 813-A
2132NG Hoofddorp, the Netherlands
Tel : +31(0)23-5540188
Fax : +31(0)23-5579065
www.tanita.eu

Business Location in UK

The Barn, Philpots Close, Yiewsley,
Middlesex, UB7 7RY,
United Kingdom
Tel : +44(0)1895-438577
Fax : +44(0)1895-438511

TANITA India Private Limited

Level 8, vibgyor Towers, G Block, C-62
Bandra Kurla Complex, Bandra (East),
Mumbai 400051, INDIA
Tel : +91-22-4090-7174
Fax : +91-22-4090-7178

TANITA Corporation of America Inc.

2625 South Clearbrook Drive
Arlington Heights, IL 60005 USA.
Tel : +1-847-640-9241
Fax : +1-847-640-9261
www.tanita.com

TANITA Health Equipment H.K. Ltd.

Unit 301-303 3/F Wing On Plaza,
62 Mody Road, Tsimshatsui East,
Kowloon, Hong Kong
Tel : +852-2838-7111
Fax : +852-2838-8667

Manufacturer

TANITA Corporation

1-14-2, Maeno-cho, Itabashi-ku
Tokyo, Japan
Tel : +81-(0)3-3968-7048
Fax : +81-(0)3-3967-3766
www.tanita.co.jp
ISO 9001 Certified