

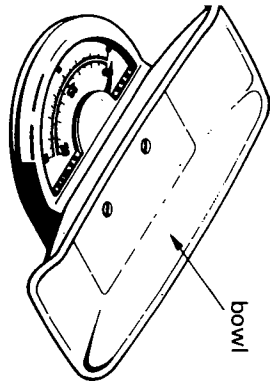


# TANITA BABY SCALE MODEL 1380 OWNER'S MANUAL

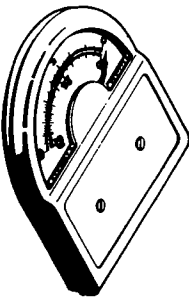
## HOW TO USE TANITA BABYSCALE

### CHARACTERISTIC

- \* TANITA BABYSCALE can be used for both baby and infant (about 6 years old). For infant, take off the bowl.
- Remark: TANITA BABYSCALE is only for baby and infant, never use for adult over 20kg. (or 44 lb)
- \* You can use TANITA BABYSCALE on a flat surface
- \* TANITA BABYSCALE has a wide view with fine graduation (50g or 2oz).



For baby

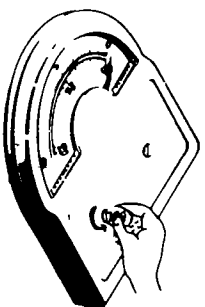


For infant

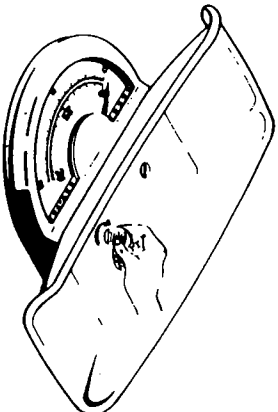
### SPECIFICATION

MAX-20kg 0-10kg/50g 10-20kg/100g  
 MAX-44lb 0-22lb/2oz 22-44lb/4oz

1. How to set up a bowl !  
 \* Take out two fixing screws by using coin.



\* Put the bowl on the scale and fasten the bowl with two fixing screws.

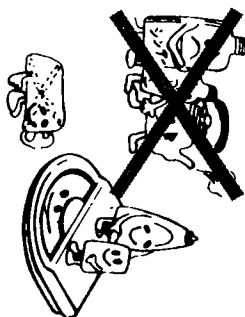


2. Never use oil for inside gears.

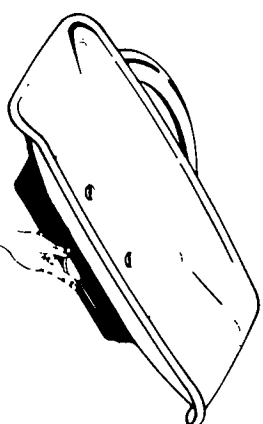


- 3 How to clean up !  
 \* When the scale wets, wipe the scale with dried cloth.

\* When the scale is dusty wipe with wet cloth and then mop up with dried cloth.



4. Before using, adjust a needle to zero point by turning the adjusting knob.



5. Do not jump on to the scale or jump down from the scale.



6. To get correct weight, place your baby in the middle of the bowl.



**TANITA CORPORATION**  
 TOKYO, JAPAN